

OFFICE ACCOMMODATION

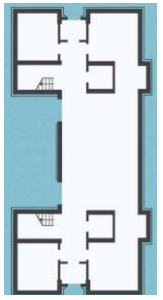
THE FACTS

If EDDC sold off the older Victorian building [the famous façade] to be converted back into affordable housing...

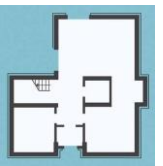
If EDDC fitted into the newer building [the main entrance block] to be completely renovated to 'fit its purpose' as a modern HQ...

[*futuresforum-a truly green alternative to eddc's proposal*](#)

Floorspace **currently used** by EDDC at Knowle > 7,722m²

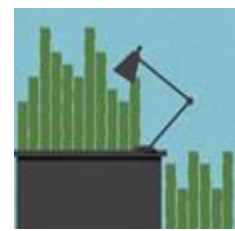


Floorspace **sought** by EDDC for its HQ > 3,352m²



£431k

The **current** annual running costs of Knowle

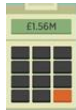


£269k

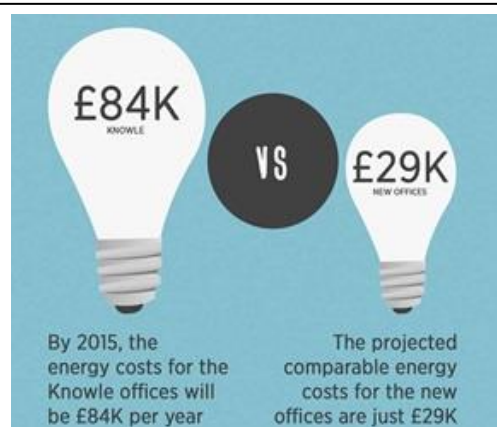
Sought-after annual costs of running HQ



£3.5M ✓✓
Anticipated market value of Victorian building



£1.56M
Cost of renovating newer block to required standard



401 tonnes

The annual amount of CO₂ emissions currently produced by Knowle

136 tonnes

The sought-after annual CO₂ emissions

It's not about annual CO₂ energy savings

It's about the CO₂ costs of constructing a new-build

2300 tonnes

The estimated 'embodied' CO₂ produced in the construction of a completely new-build of 3,352m²

> [Embodied CO2 Estimator](#) > [housing-demolition-or-refurbishment@bis.gov.uk](#)
> [What's the carbon footprint of ... a house | Environment | guardian.co.uk](#)

EDDC has disclosed its relocation project has cost £0.25m – so far.

[£1million is just essential repairs - Letters - Sidmouth Herald](#)

This figure does not include Officer Time spent on the project.

[Response to Chief Executive's reply to SOS Open Letter to EDDC | Save Our Sidmouth](#)

"How would you spend a spare £0.5million?"

"Help youngsters by setting up training schemes... building some



low cost starter units and offices. "

"Provide a roof over young people's heads by building some



social housing in appropriate locations."

[Waste of money? - Letters - Sidmouth Herald](#)